



List of contacts

LEAD PARTNER AND PROJECT COORDINATOR:

**University of East London / The Rix Centre
(United Kingdom)**

Andy Minnion
a.t.minnion@uel.ac.uk
Charlotte Saward
c.saward@uel.ac.uk

PARTNERS:

Atempo (Austria)

Helmut Schinnerl
helmut.schinnerl@atempo.at

Apeirons (Latvia)

Daina Calite
dainapo@inbox.lv

**European Association of Service Providers for
Persons with Disabilities (Belgium)**

Charlotte Boetticher
charlotte.boetticher@easpd.eu

FAIDD (Finland)

Sisko Rauhala
sisko.rauhala@kvl.fi

Fenacerci (Portugal)

Sandra Marques
smarques@fenacerci.pt

W2ID Project is funded with the generous support of
The EU Lifelong Learning and Education Programme and the
Audiovisual and Culture Executive Agency

www.w2id.eu

Web 2.0 for People with Intellectual Disabilities

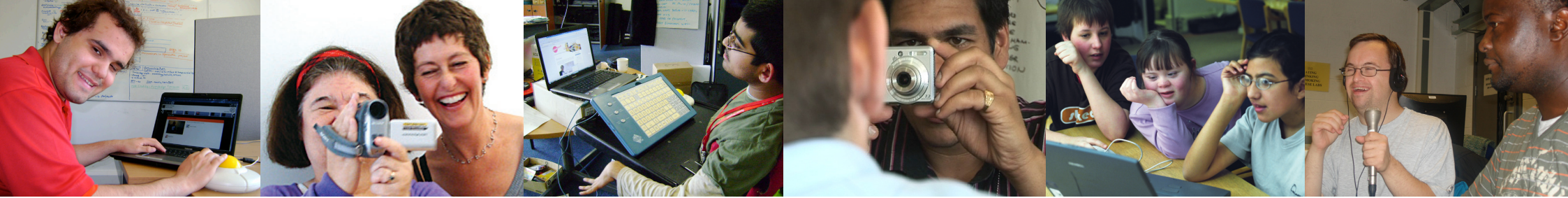


Funded with the
generous support of:



Lifelong Learning Programme





What is W2ID?

The **W2ID Project** brings together organisations from across Europe to explore, research and develop the use of the Web for the benefit of people with intellectual disabilities.

W2 stands for 'Web 2.0', the second generation of the Internet and the Worldwide Web that features people making their own online multimedia content, linking up and sharing knowledge, ideas and opinions. The project wants to make it easier for people of all abilities to participate in Web 2.0 activity, creating content and using tools like blogs, social networks and wiki websites to enrich their lives.

ID stand for the people with intellectual disabilities who are at the heart of the project. They are working with W2ID partner organisations to look at ways cameras, microphones and online software packages can be made accessible for as wide a range of people as possible to use. The Project will develop training and support resources to help everyone to make the most of the latest multimedia authoring and distribution tools.

The **W2ID** project aims to improve the employability skills, active citizenship and community participation of the European intellectual disability community. The Project will co-develop, pilot, evaluate and distribute a fully participatory Web.2.0-based peer-learning system called '**Klik in**' – through which life skills can be learned and shared.

W2ID will gather together existing free and Open Source web packages, refine them with disabled users and make them more widely available through the new easy-to-use **Klik in** Web 2.0 system, complete with learning and support resources.

We will trial **Klik in** with a range of young learners and adults with intellectual disability in 5 project partner countries: Portugal, Latvia, Finland, United Kingdom and Austria.

klik in 

By actively involving the intellectual disability community as co developers and participants we will develop **Klik in** as a unique peer-learning network that enables people to build and share personal experiences, knowledge and information.

The combination of Project partner's expertise and the input of people with intellectual disabilities will result in a new European Web 2.0 system themed on employability, inclusion and active citizenship.

Klik in will feature:

- **A European Support HUB and Trans-national Web Portal** with training resources, guidance and online support for participants, supporters and facilitators.
- **A network of 'easy-build wiki websites', linked to National level portals** to share peer-produced content and learning resources across wider language communities.
- **A vibrant mix of multimedia stories, advice and web 2.0 tools** that will celebrate the lives of Europeans with intellectual disabilities and inspire everyone to use the web in creative, safe and social ways.